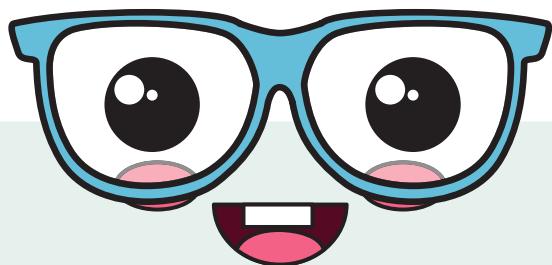




# SAFETY & SECURITY AT THE ELC

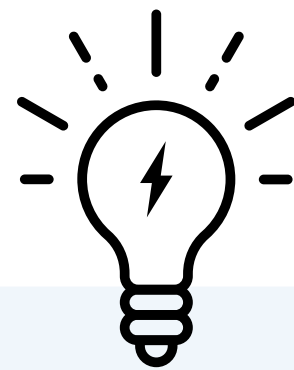
We are committed to maintaining a school that is safe and secure for our students, staff, and visitors. Considerable time, expertise, and funds have gone into strengthening safety and security measures on our campus. We regularly review and practice fire, earthquake, and safe shelter drills.



## See Something? Say Something!

Did you know that our own community members are our best first line of defense?

If you notice something that seems off or out of place, do not hesitate to alert a LILA staff member immediately.



## Did You Know?

All LILA sites have an A.E.D. machine



## Practice, Practice, Practice!

Emergency drills are conducted regularly to ensure that everyone on campus knows what to do in the case of an emergency.

Every year, all faculty and staff receive first aid, CPR and epipen administration training.

We will notify you ahead of time before conducting a safe shelter drill.



## What Guardians Can Do to Help

- Save the school phone number in your phone so you know when we are trying to get a hold of you: **323-522-3848**
- Ensure that your vehicle has a LILA sticker in the front windshield.
- Alert the School if someone is no longer on your pick up list. Provide a photo if there is a safety concern.
- **Opt in to text messages! Text "yes" to 67587**
- Be courteous to staff if they stop you and ask you to identify yourself.
- Make sure to close doors and secure gates behind you.
- Follow protocol for adults on campus.



## Evacuation Sites

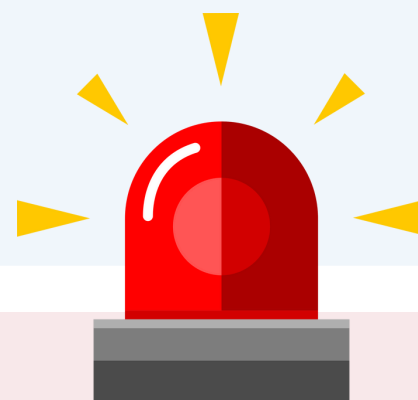
Our off-campus evacuation sites are

**Casimir Church** (2718 St. George St.)

OR

**Gelsons** (2725 Hyperion Ave.)

Where we go is dependent on which location is deemed safest to get to and best-suited for the needs of the emergency.



## WHAT GUARDIANS SHOULD KNOW IN AN EMERGENCY

- **Do NOT call or come to campus unless instructed to do so. This only hampers emergency communication and access.**
- **We will send emergency communication as soon as we can (via emergency text, robocall or email)**
- We have evacuation sites on and off campus, and will determine which is safest for the given emergency
- If emergency personnel respond to an emergency, **THEY ARE IN CHARGE** and we must follow their instructions and guidance